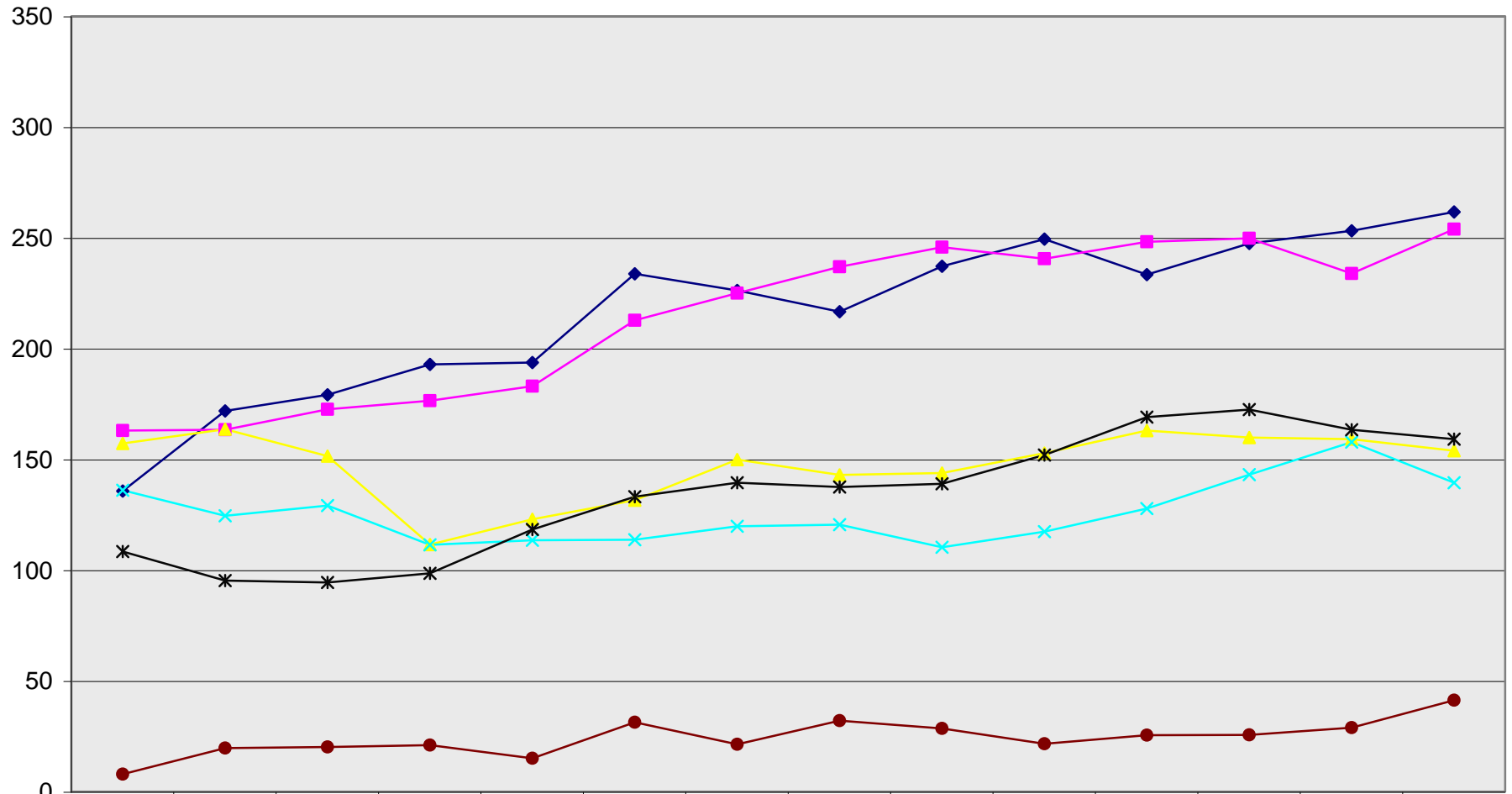


# Annualized Undergraduate Equivalent Enrolments Taught (EET) - Fine Arts

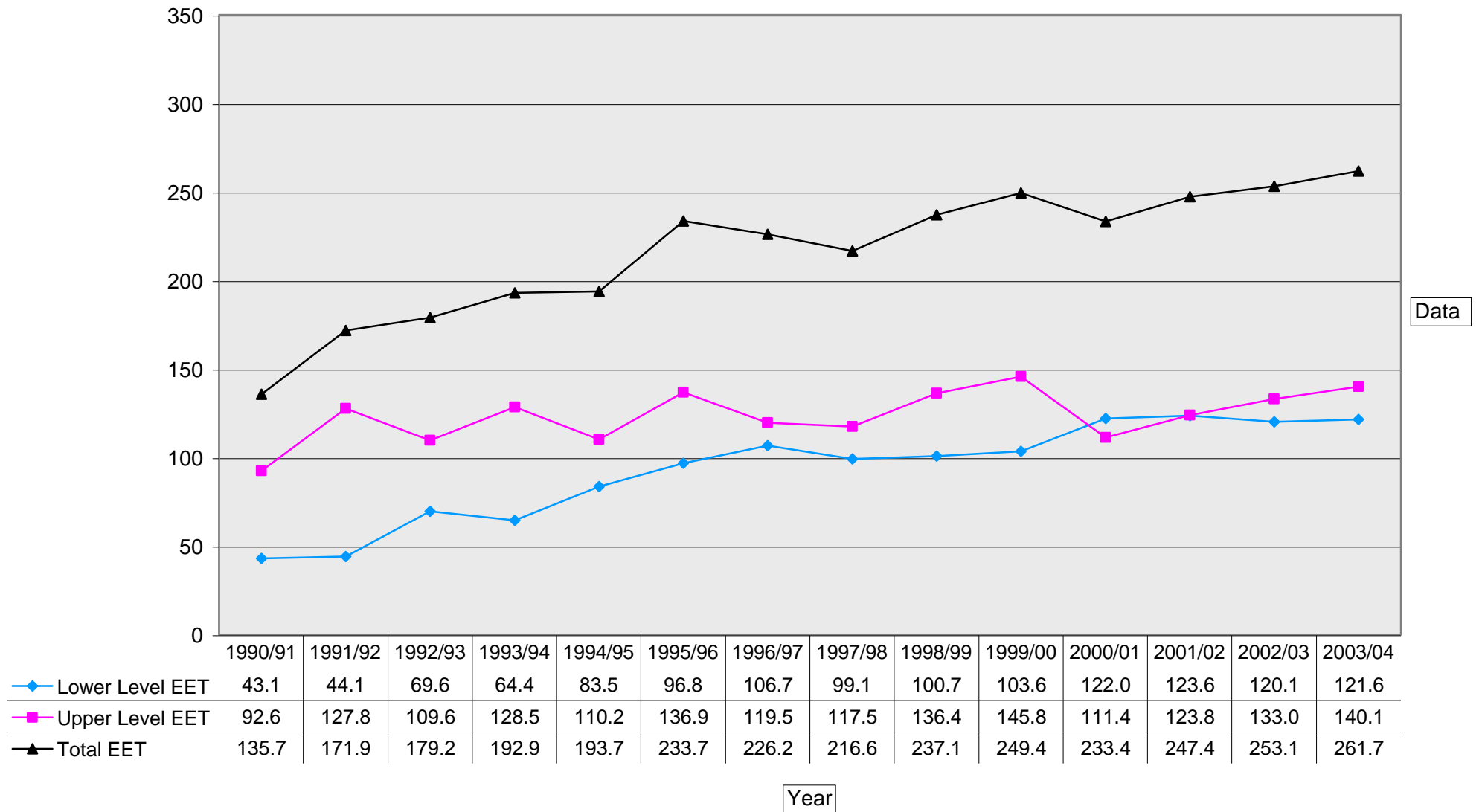


	1990/91	1991/92	1992/93	1993/94	1994/95	1995/96	1996/97	1997/98	1998/99	1999/00	2000/01	2001/02	2002/03	2003/04
◆ History in Art	135.7	171.9	179.2	192.9	193.7	233.7	226.2	216.6	237.1	249.4	233.4	247.4	253.1	261.7
■ Music	163.0	163.4	172.5	176.4	183.0	212.7	225.0	237.0	245.8	240.5	248.2	249.7	233.9	253.9
▲ Theatre	157.2	163.6	151.4	111.5	123.0	131.5	149.9	143.0	143.8	152.8	163.0	159.8	159.1	153.9
✕ Visual Arts	136.0	124.5	129.1	111.4	113.5	113.7	119.8	120.5	110.3	117.4	127.8	143.1	157.8	139.5
* Writing	108.4	95.3	94.5	98.6	118.4	133.1	139.5	137.5	138.9	152.0	169.1	172.5	163.3	159.1
● Taught at Fac. Level	7.9	19.7	20.1	21.0	15.1	31.3	21.4	32.0	28.5	21.6	25.5	25.6	28.9	41.3

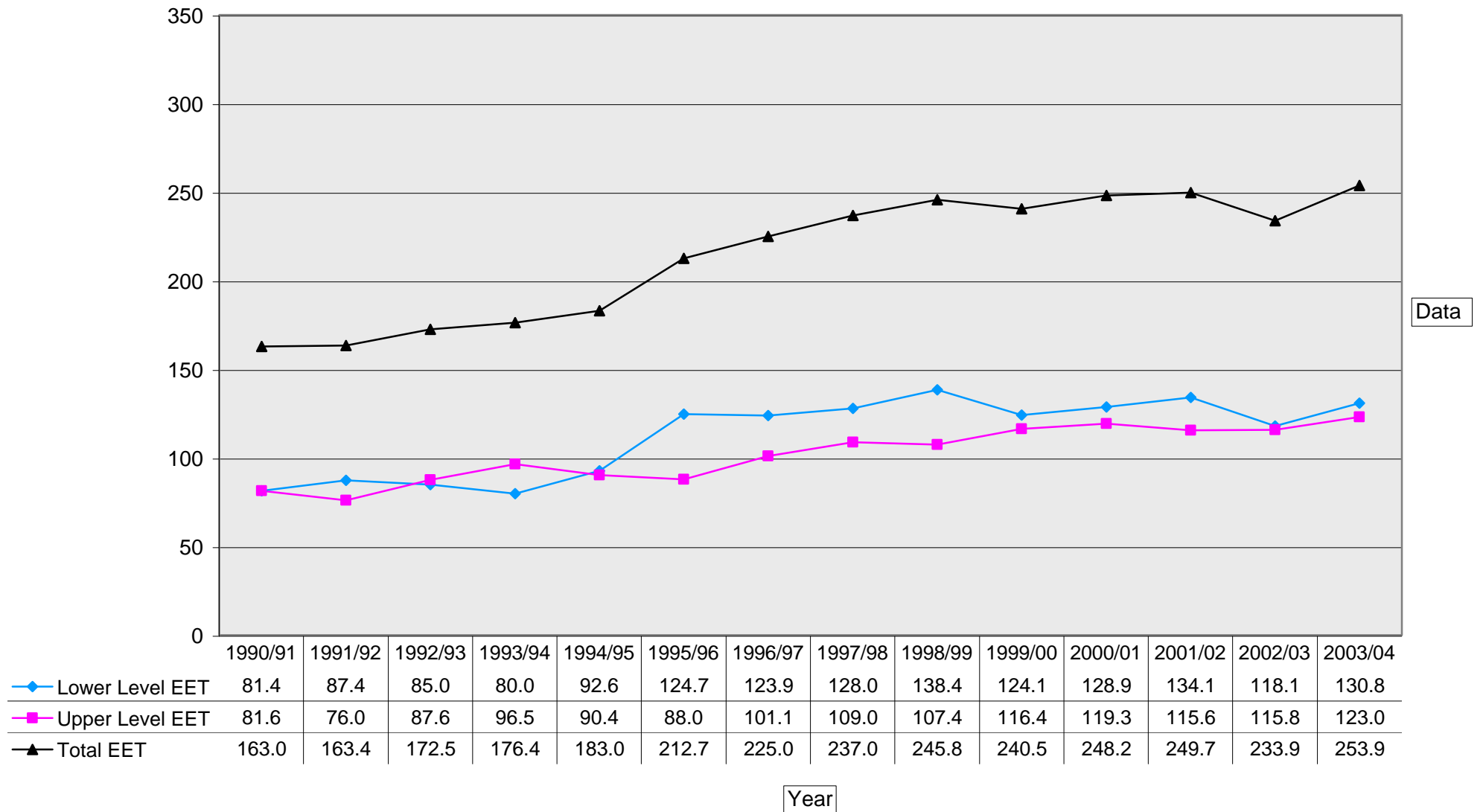
Source: ClassPops (ARAI Table 1)  
University of Victoria

Institutional Planning & Analysis  
March 5, 2004

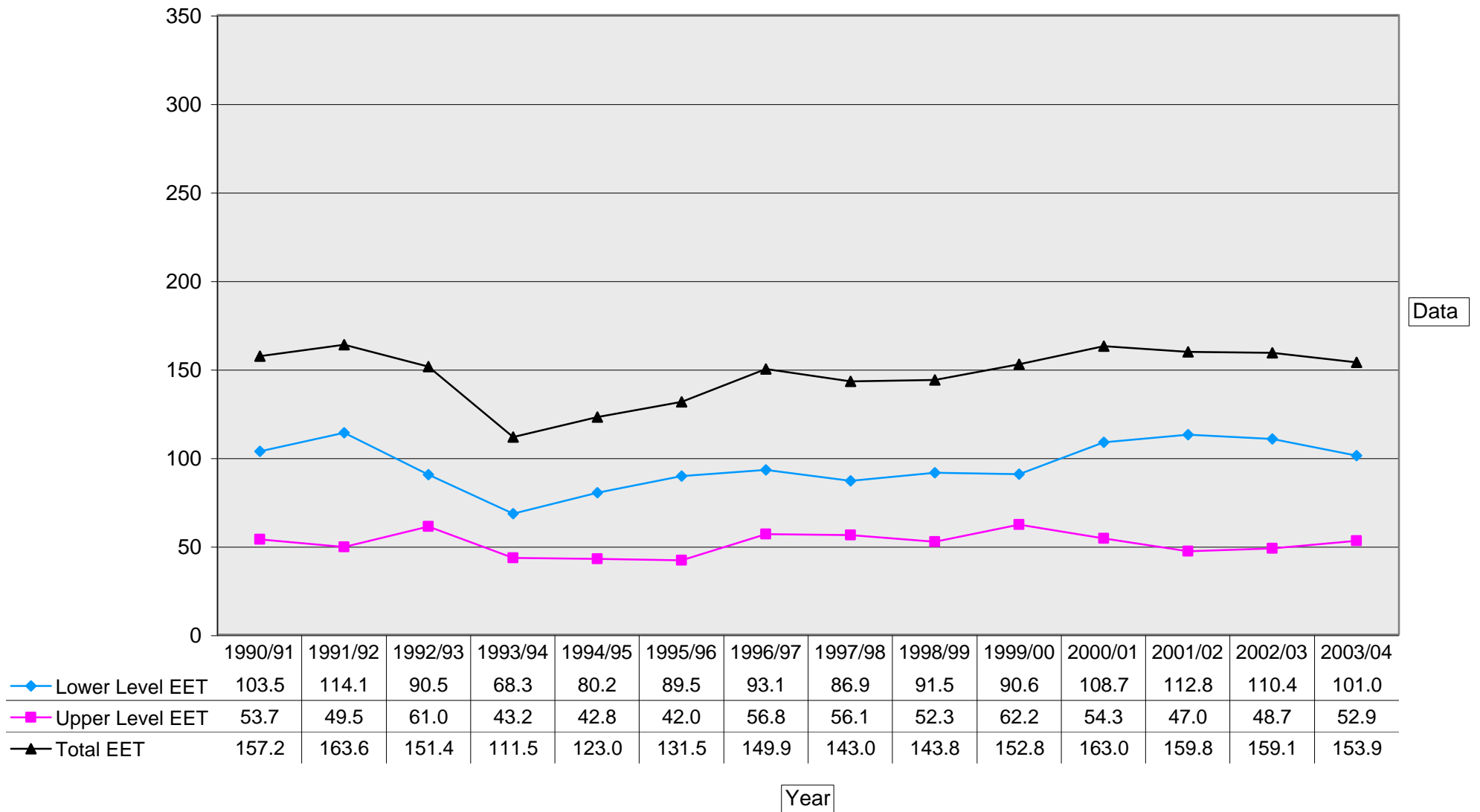
## Annualized Equivalent Enrolments Taught (EET)



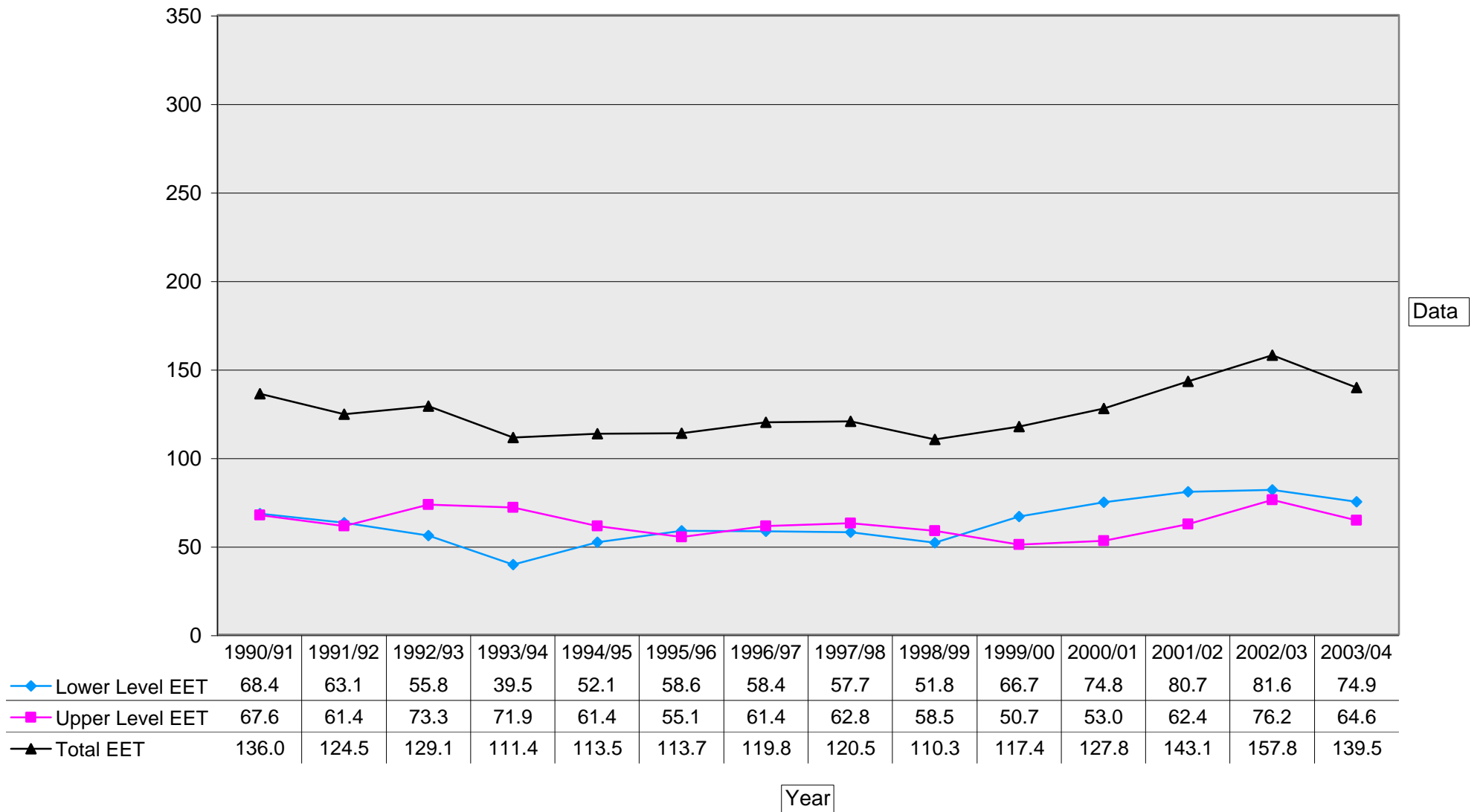
## Annualized Equivalent Enrolments Taught (EET)



## Annualized Equivalent Enrolments Taught (EET)



## Annualized Equivalent Enrolments Taught (EET)



## Annualized Equivalent Enrolments Taught (EET)

